


Scottish Paediatric Endocrine Group Network

Education Strategy



*National
Services
Division
(NSD)*

Document control

Key Information:

Title:	SPEG Education Strategy
Date First Published/Issued:	28/04/2015
Date Effective From:	01.05.2015
Version/Issue Number:	03
Document Type:	Word
Document status:	Current
Author:	Mrs Lisa Stewart
Owner:	SPEG Education Group
Approver:	Dr Louise Bath
Approved by and Date:	SPEG Steering Group
Contact:	Mrs Lisa Stewart 0131 275 7570
File Location: NSD K Drive	

Revision History:

Version	Date:	Summary of Changes:	Name:	Changes Marked:
V02	12/04/2019	Review in light of change in Education Group Chair	Lisa Stewart	No
V03	31/05/2019	Review in light of Education Group feedback	Lisa Stewart	No

Approvals: This document requires the following signed approvals.

Name	Title/Division:	Date of Issue:	Version:
Dr Louise Bath (Chair)	Consultant in Paediatric Endocrinology and Diabetes	31/05/2019	V03
SPEG Steering Group			

Distribution: This document has been distributed to:

Name	Title/Division:	Date of Issue:	Version:
SPEG Steering Group	NHS National Services		V02

	Scotland NHS Boards		
--	------------------------	--	--

TABLE OF CONTENTS

Introduction.....4

Governance.....4

Education Scope.....5

Education Deliverables.....7

1.1 Introduction

Ongoing education in paediatric endocrinology is an essential component of the work of the SPEG National Managed Clinical Network (NMCN). Education and training are core principles of any NMCN, as stated in “Strengthening the role of Managed Clinical Networks”, NHS HDL (2007).

‘Networks education and training potential should be used to the full, in particular through exchanges between those working in the community and primary care and those working in hospitals or specialist centres.

The role of all networks is to ensure that professionals involved in the network are participating in appropriate systems which assess competence to carry out duties on behalf of the network and the participating clinicians are involved in a programme of continuous professional development.’

The SPEG Network endorses the principles of ongoing education and training.

The following principles underpin the education strategy:

- Ensure that education and training for all health professionals involved in caring for a child with an endocrine condition is provided to the highest standard.
- Ensure that education and training programmes are in place and are continually provided and developed by its members.
- Ensure that education and training programmes are delivered in a consistent approach across Scotland.

Education and training should be provided for both staff with interests in paediatric endocrinology as well as to primary care clinicians and general paediatricians who will have some role in managing children with paediatric endocrine conditions.

1.2 Governance

This Education Strategy is designed to support the work of SPEG. It will be managed by the Education Group, and governed through the Lead Clinician and Steering Group of the network.

Role of Education Group

- Manage the delivery of the education plan
- Support development of education material and resources
- Plan the annual scientific meeting and bi-annual Clinical and Academic meetings
- Evaluate the Education Strategy and education plan
- Provide updates on the education Strategy and education plan progress to the Steering Group

Steering Group

- Final approval of the Education Strategy

1.3 Education Scope

SPEG Website

It is recognised that the SPEG website is an important hub for all the network's activities. It will continue to be used to host educational materials, presentations, and links to useful information for anyone involved in the care of children with endocrine conditions. It will also signpost all clinicians interested in paediatric endocrinology to enable them to find out what is available relating to paediatric endocrine education

SPEG Education Events

SPEG Annual Scientific Meeting

This is an annual meeting organised by the SPEG Education Group. Its aims are to deliver up to date education regarding paediatric endocrinology, recent advances and recent research. It also gives clinicians and paediatricians in training an opportunity to present audit projects and interesting cases.

SPEG Clinical and Academic Meeting

This meeting is held twice a year and organised by the Education Group. The meetings are more informal meetings aimed at health professionals with an interest in paediatric endocrinology. Discussions related to guideline development, research projects and updates in endocrine care are presented and discussed.

Nurse Education

The SPEG Nurses' Group has developed an education and training programme for endocrine nurses and nurses with an interest in endocrinology.

Currently there is no specific education programme for nurses in endocrinology in Scotland.

Regional Clinical Meetings

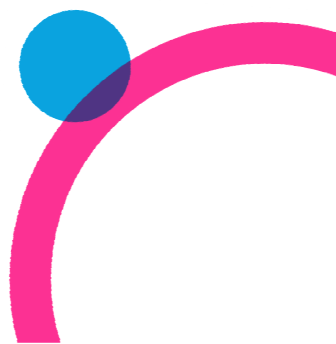
The West of Scotland has introduced regional educational events for general paediatricians. These events have been delivered locally and are hosted by the district general hospital teams. The events are clinically based, and centred around case presentations and case discussions. The events take place once a year in peripheral centres on a rotational basis. The regional meetings have had excellent feedback, with a desire for these to continue. They are seen to be a useful tool for ongoing and targeted paediatric endocrine education.

Education Workshops

Growth Workshops

The network has developed resources and, in the past, delivered growth workshops in local areas. The workshops were designed to deliver growth and maturation training to primary care health professionals as well as to general paediatricians and paediatricians in training.

However, it is a challenge for clinicians to take time away from practice and training could be delivered in more creative ways. For example, building on existing care pathways such as the Universal Health Visiting Pathway in Scotland – where normal growth and development are monitored.



On-line Educational Module

SPEG has developed an online educational module giving teaching on growth and puberty. This was developed by Dr Guftar Shaikh (Consultant Paediatric Endocrinologist, NHS Greater Glasgow and Clyde), Mrs Barbara Wardhaugh (Paediatric Endocrine Nurse Specialist, NHS Lothian), and Dr John Schulga (Consultant Paediatrician, NHS Forth Valley) on behalf of SPEG.

This LearnPro module is now available for use across Scotland. Since some NHS Boards have difficulty in accessing LearnPro, NHS Education for Scotland (NES) has proposed to host the module content on Turas, which is universally available to all NHS staff.

Future plans

The Education Group acknowledges the requirement to provide education and training in a range of formats to meet the needs of clinical staff across NHS Scotland. The group will maximise use of online learning, VC case study discussions, website resources and WebEx.

In addition to providing specialised education events on paediatric endocrinology, greater opportunities could be made for improving knowledge in primary care and with general paediatricians and in raising awareness of the SPEG network. The group will optimise participation and networking in other national events and primary care conferences.

2. Education Deliverables

	Deliverable	Timeframe
1	SPEG will promote the network and resources	2019-22
2	SPEG will engage with the paediatric endocrinology community through an Annual Scientific meeting and two Clinical and Academic meetings per year	January 2020
3	SPEG will share good practice in the paediatric endocrinology community through peer articles in its newsletters	2019-22
4	SPEG will respond to requests for education and training on emerging topics	2019-22
5	SPEG will develop education and training packages that will include education events as well as LearnPro (Turas) modules for the paediatric endocrinology community	2019-20
6	SPEG will deliver paediatric trainee education days as required	2019-22
7	SPEG will improve the knowledge and skills within the paediatric endocrinology community to improve patient care	2019-22
8	SPEG will support the Nurses' Group to develop and deliver a paediatric endocrine nurse education strategy	2019-22
9	SPEG will maximise opportunities to improve paediatric endocrine knowledge with general paediatricians and in primary care	2019-22